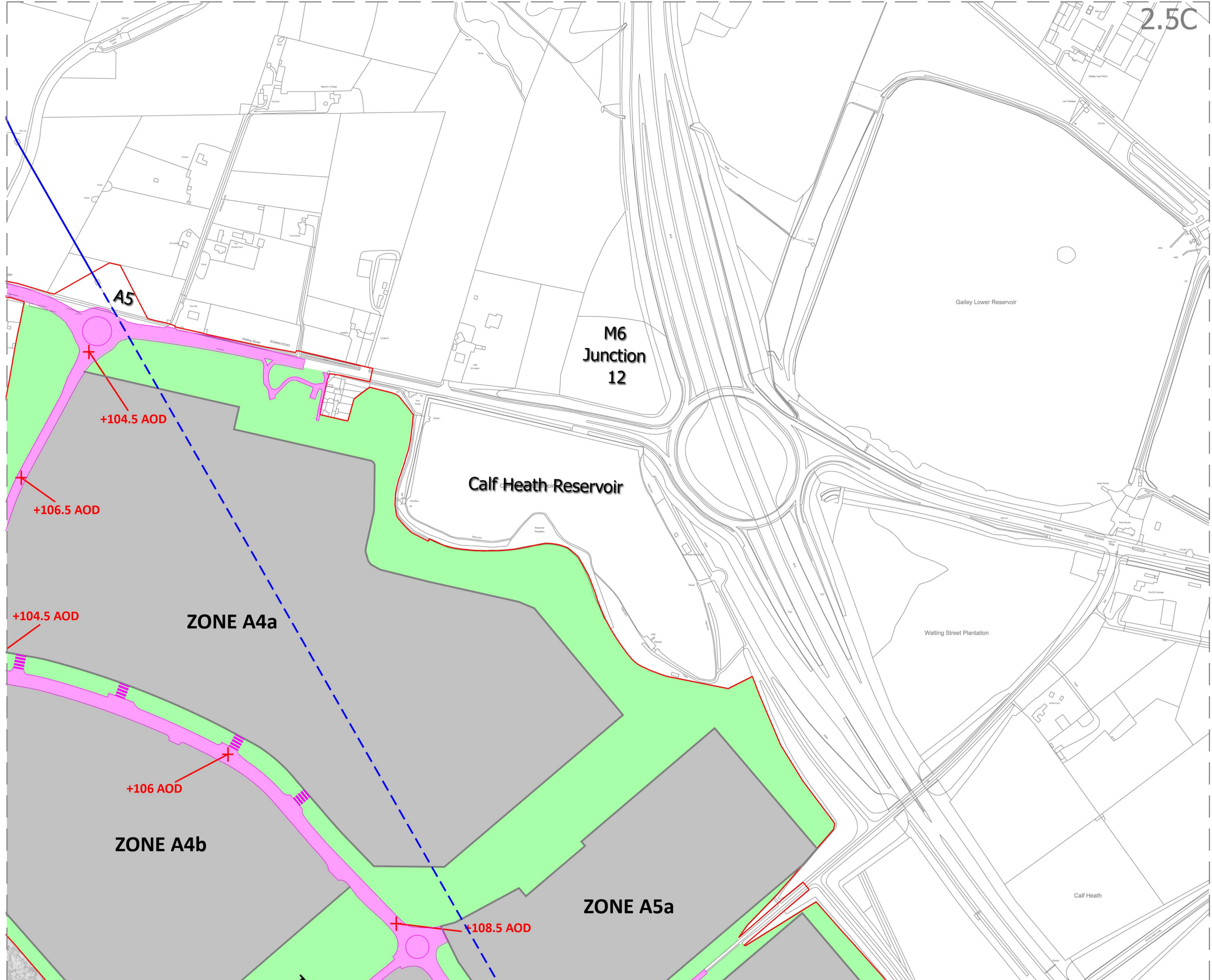
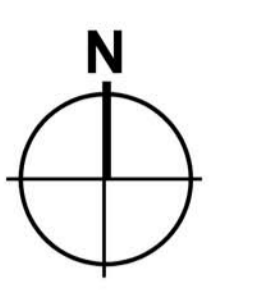


2.5C



- Order Limits
- Zone A1-A7 - Development Areas
- Zone B - Rail terminal, container storage, Parking area and associated welfare facilities.
- Zone C - Rail corridor including new rail lines and landscaping.
- New on-site road infrastructure and access.
- Landscaping
- Estate Management Offices / Amenity and Welfare Facilities
- Residential Property and Curtilage
- Plot Access Points through Green Infrastructure (precise location and extent to be approved at time of submission of details for approval post DCO approval)
- Canal crossings to be demolished
- Existing Overhead Electricity Cables
- Existing Overhead Electricity Cables to be re-routed underground

Limits of Deviation shown on works plan and set out in Article 4 of the DCO  
Note: All AOD levels shown for the new on-site road infrastructure are subject to a vertical deviation of 0.5 metres upwards or downwards

+104.5 AOD

+106.5 AOD

+104.5 AOD

+106 AOD

+108.5 AOD

**ZONE A4b**

**ZONE A4a**

**ZONE A5a**

**A5**

**M6 Junction 12**

**Calf Heath Reservoir**

Gailey Lower Reservoir

Watling Street Plantation

Calf Heath

Revisions			
<b>West Midlands Interchange</b>			
Project THE WEST MIDLANDS RAIL FREIGHT INTERCHANGE ORDER 201X			
Drawing Status SUBMISSION			
Drawing Title PARAMETER PLAN DEVELOPMENT ZONE PLAN - SHEET 3		Drawing Size A1	
Regulation 5 (2) (o)	Document 2.5C		
Drawn SM	Date MARCH 2018	Scale 1/2500	Reviewed PMS
Drawing No. 4049 - 1037			Rev. 08